



ELK Biotechnology

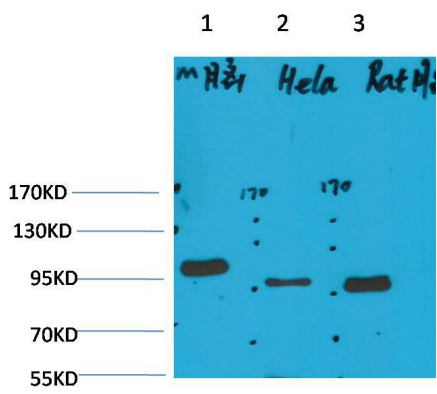
EphA1 Rabbit pAb

Catalog NO.: EA283

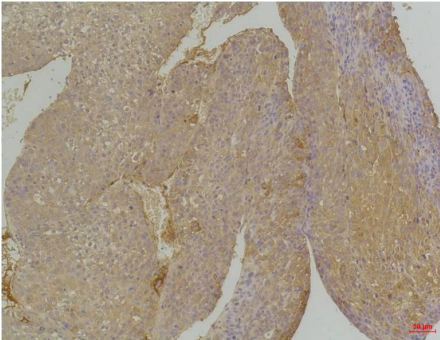
For research use only.

Overview

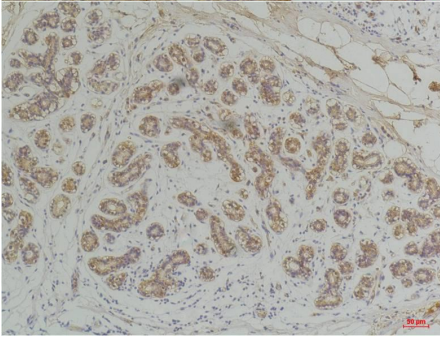
Product name	EphA1 Rabbit polyclonal antibody
Source	Rabbit
Applications	WB, IHC
Species reactivity	Human, Rat, Mouse
Recommended dilutions	WesternBlot:1/1000-2000 Immunohistochemistry:1/100-200 NOTE: Optimal dilutions should be determined by the end user.
Immunogen	Synthetic Peptide
Species	Human
Storage	PBS with 0.02% sodium azide and 50% glycerol pH 7.4. Store at -20° C. Avoid repeated freeze-thaw cycles.
Isotype	IgG
Clonality	Polyclonal
Concentration	1 mg/ml
Observed band	110kDa
GenelD (Human)	2041
Human Swiss-Prot No.	P21709
Cellular localization	Cell membrane, Membrane
Alternative Names	EPH Receptor A1, MGC163163, Tyrosin protein kinase receptor EPH
Background	The Eph receptors are the largest known family of receptor tyrosine kinases (RTKs). They can be divided into two groups based on sequence similarity and on their preference for a subset of ligands.



Western blot analysis of 1)Mouse Brain Tissue, 2)Hela, 3)Rat Brain Tissue with EphA1 Rabbit pAb EA283 diluted at 1:2,000.



Immunohistochemical analysis of paraffin-embedded Human Hepatocarcinoma using EphA1 (EA283) Rabbit pAb diluted at 1:200.



Immunohistochemical analysis of paraffin-embedded Human Breast Carcinoma using EphA1 (EA283) Rabbit pAb diluted at 1:200.