



ELK Biotechnology

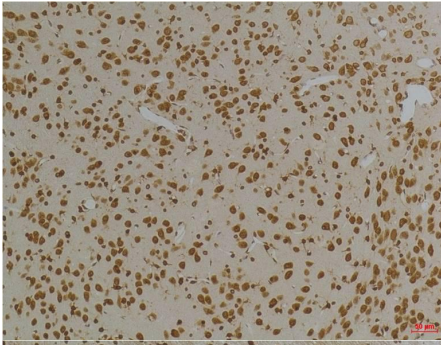
Kv10.1 Rabbit pAb

Catalog NO.: EA311

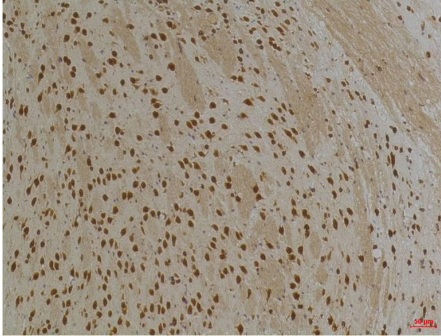
For research use only.

Overview

Product name	Kv10.1 Rabbit polyclonal antibody
Source	Rabbit
Applications	IHC
Species reactivity	Human, Rat, Mouse
Recommended dilutions	Immunohistochemistry:1/100-200 NOTE: Optimal dilutions should be determined by the end user.
Immunogen	Synthetic Peptide
Species	Human
Storage	PBS with 0.02% sodium azide and 50% glycerol pH 7.4. Store at -20° C. Avoid repeated freeze-thaw cycles.
Isotype	IgG
Clonality	Polyclonal
Concentration	1 mg/ml
Observed band	50kDa
GenID (Human)	170850
Human Swiss-Prot No.	Q8TAE7
Cellular localization	Cell membrane, Cytoplasm, Membrane
Alternative Names	KCNG3,KV6.3,Voltage-gated potassium channel subunit kv10.1
Background	N/A



Immunohistochemical analysis of paraffin-embedded Rat BrainTissue using Kv10.1 (EA311) Rabbit pAb diluted at 1:200.



Immunohistochemical analysis of paraffin-embedded Mouse BrainTissue using Kv10.1 (EA311) Rabbit pAb diluted at 1:200.