



# ELK Biotechnology

WIPI2 Rabbit pAb

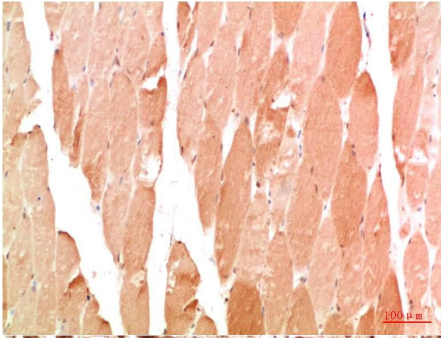
Catalog NO.: EA358

For research use only.

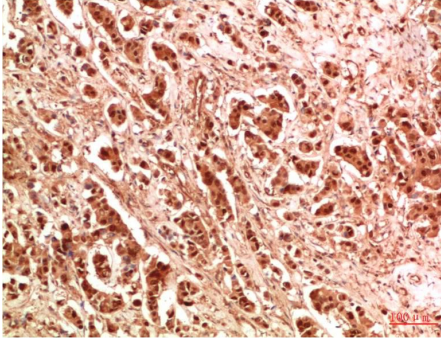
## Overview

---

|                       |   |
|-----------------------|---|
| Product name          | WIPI2 Rabbit polyclonal antibody  |
| Source                | Rabbit  |
| Applications          | IHC   |
| Species reactivity    | Human, Mouse, Rat   |
| Recommended dilutions | <b>Immunohistochemistry:1/100-200</b><br><b>NOTE: Optimal dilutions should be determined by the end user.</b>   |
| Immunogen             | Recombinant Protein   |
| Species               | Human   |
| Storage               | PBS with 0.02% sodium azide and 50% glycerol pH 7.4.<br>Store at -20° C. Avoid repeated freeze-thaw cycles.   |
| Isotype               | IgG   |
| Clonality             | Polyclonal  |
| Concentration         | 1 mg/ml   |
| Observed band         | <b>49kDa</b>  |
| GeneID (Human)        | 26100   |
| Human Swiss-Prot No.  | Q9Y4P8  |
| Cellular localization | Membrane  |
| Alternative Names     | ATG21, CGI50  |
| Background            | WIPI2 is the mammalian homolog of Atg18, not Atg21, along with the closely related protein, WIPI1. WD40 repeat proteins regulate the assembly of multiprotein complexes by presenting a beta-propeller platform for simultaneous and reversible protein-protein interactions. Members of the WIPI subfamily of WD40 repeat proteins, such as WIPI2, have a 7-bladed propeller structure and contain a conserved motif for interaction with phospholipids. |



Immunohistochemical analysis of paraffin-embedded Human Skeletal Muscle Tissue using WIPI2 (EA358) Rabbit pAb diluted at 1:200.



Immunohistochemical analysis of paraffin-embedded Human Breast Carcinoma Tissue using WIPI2 (EA358) Rabbit pAb diluted at 1:200.